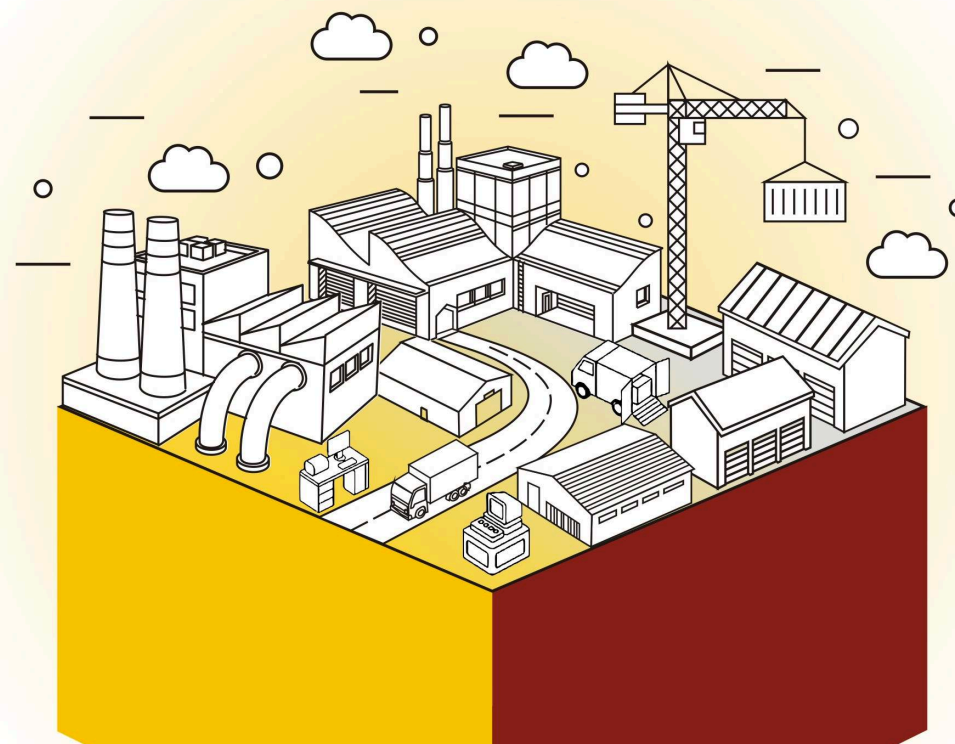


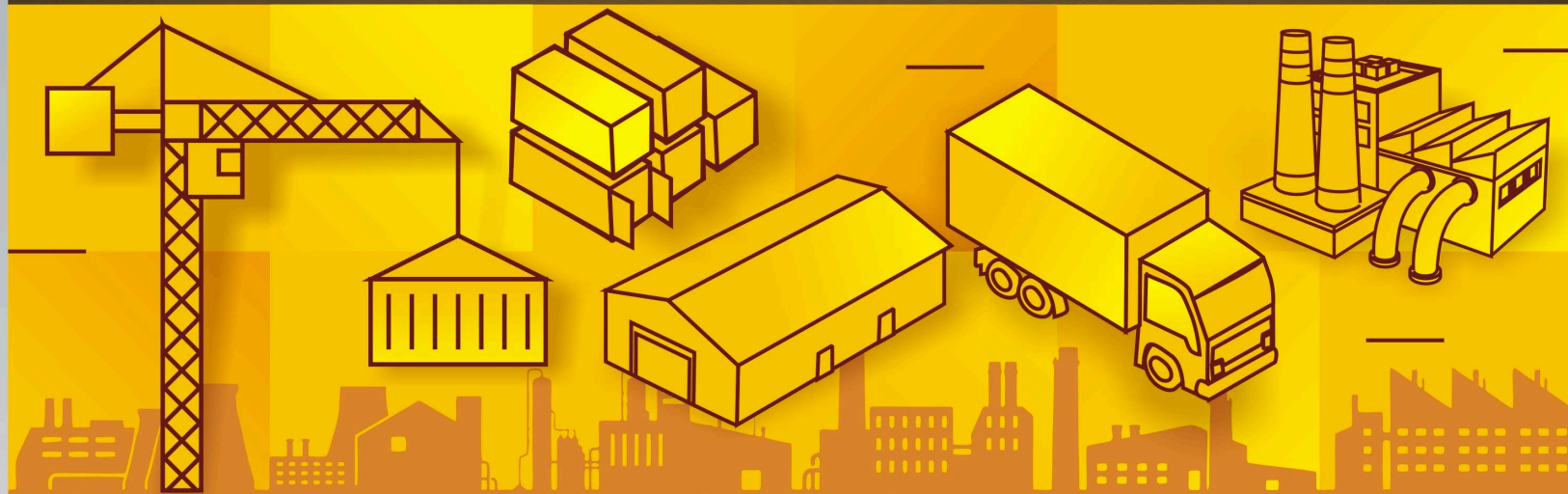


Scale Up @ New Horizon of
Superstrong Base !



Industrial Township by
TOWNSCAPE BUILDCON LLP.

R E A D Y
I N F R A S T R U C T U R E



A New Rising Star On Golden Horizon Of Business Near Kolhapur!

Icon Industrial Park, Ambap, Kolhapur.

A unique venture by **Townscape Buildcon LLP**, a leading name in business solutions and development.

A group of partners known for setting high standards in Real Estate, Manufacturing, Textile, Trading, Retail and Agriculture has poured its years of experience to design and plan an Industrial Park aimed at Your Business growth.

Welcome to the era of new industrial revolution.



**INDUSTRIAL PLOTS FOR
MACHINE SHOPS
FOUNDRIES
WAREHOUSES
START UPS
GODOWNS
PROCESSING UNITS
MANUFACTURING UNITS
I.T. ENTERPRISES**

ICON INDUSTRIAL PARK

A unique project in Ambapwadi is a professional's paradise on Pune Bangalore Highway. A project offering not just Industrial NA Plots, but provide the well-equipped space you were looking for to grow your business dreams. Indeed, the best option for your business growth near Kolhapur city, which is connected to Sangli, Satara, Sholapur, Pune, Konkan and South Karnataka by economical means of transport.

ADVANTAGE

The city of Kolhapur, which has a rich legacy of successful businessmen, is still the first choice of many businesses worldwide. Kolhapur city is an ideal location for businesses due to the availability of skilled manpower, abundant natural resources, and connectivity to several business hubs around. Be it a startup or an established business, ICON INDUSTRIAL PARK in Ambapwadi, Kolhapur is all set to welcome the new era of Industry 4.0.

Come,

Be a part of it

Sail on the wave of opportunities.

ICON
INDUSTRIAL PARK



Plot No.	Plot Area (Sqmt.)	Plot Area (Sqft.)
01	1157.45	12455
02	982.71	10574
03	1040.47	11196
04	1098.22	11817
05	1155.97	12439
06	1267.8	13642
07	1058.27	11387
08	2029.05	21833
09	2042.04	21973
10	2143.92	23069
11	384.57	4138
12	908.55	9776
13	867.06	9330
14	917.64	9874
15	891.29	9591
16	829.15	8922
17	1118.76	12038
18	1084.07	11665
19	1154.5	12423
20	1141.15	12279
21	977.26	10516
22	782.97	8425
23	1938.78	20862
24	1948.88	20970
25	2798.19	30109
26	3462.49	37257
27	2447.73	26338
28	2456.26	26430
29	874	9405
30	2349.4	25280
31	2536.72	27296
32	1543.89	16613
33	837.5	9012
34	976.89	10512
35	1049.46	11293
36	1217.6	13102
37	1140.45	12272
38	1045.65	11252
39	1442.89	15526
40	768.06	8265
41	700	7532
42	700	7532
43	700	7532
44	763.77	8219
45	763.77	8219
46	700	7532
47	1296.02	13946
48	1312.5	14123
49	1312.5	14123
50	1288.78	13868
51	2945.36	31693
52	1545.07	16625
53	1520.11	16357
54	1351.62	14544
55	1480.66	15932
56	947.91	10200
57	1341.89	14439

**PLOT AREA
AVAILABILITY**





Internal Chowk



Internal Chowk



Truck Terminus & Open Space



ICON
INDUSTRIAL PARK

BIRDS EYE VIEW

VILLAGE ROAD

OPEN SPACE



INSIGHTS :-

TP sanctioned layout with industrial NA on Free hold industrial zone. Can utilise full FSI potential

Amenities like 15-18 & 24 mtrs wide Tar roads with street lights, developed recreational open space, waste water management, RCC gutters, truck terminus and many more

Uninterrupted power with 11 kva Electric supply from transformer for each plot and sufficient water supply.

Industrial plotting to cater requirements of foundry, machine shop, cold storage, logistic park, transport hub, food industry, fabrication workshop and IT park.

Free hold plots with private ownership. Right opportunity for investment also.

Stampduty exemption on plot purchase can be availed and also all D Zone Government Industrial subsidies available

Availability of skilled and unskilled labor in vicinity.



Open Space

TBL
TOWNSCAPE BUILDCON



TBL
TOWNSCAPE BUILDCON

LOCATION MAP



An Initiative By



Office :

TOWNSCAPE BUILDCON LLP

0/12, Royal Courts, Panch Bungalow,
Shahupuri, Kolhapur - 416001

Phone : **0231-2533999 / 2531089**

E-mail : info@surajdevelopers.com

www.surajdevelopers.com

ICON INDUSTRIAL PARK

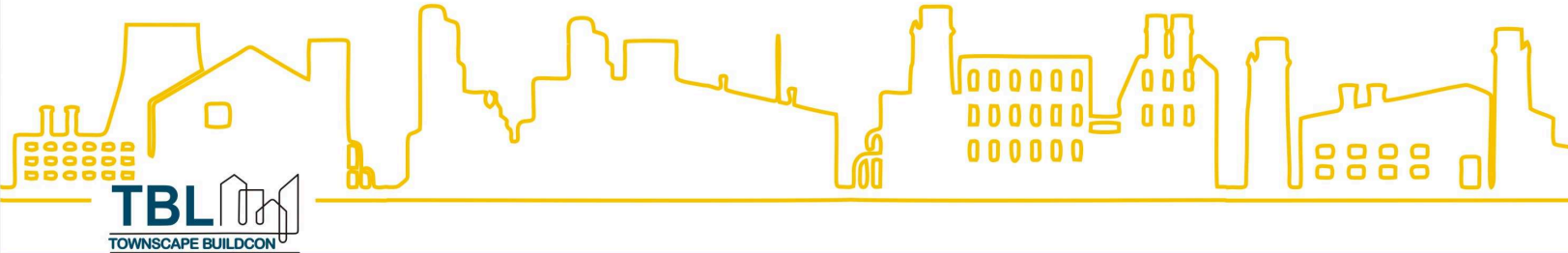
Site :

Icon Industrial Park, Opp. Aditi Industries,
Near Star Ganga Rice Mill,
Ambapwadi Road, Ambap, Kolhapur.

Rupesh : 9765788542

Booking Contact

Sanjay Joshi : 89564 09696 | B. V. More : 99233 98003



NOTE : This brochure is merely conceptual and is not a legal document, it can not be treated as a part of final purchase agreement. All dimensions are approximate and subject to construction variances. Images are only for illustrative purpose. Developers reserves the rights to amend architectural specifications during development stages.