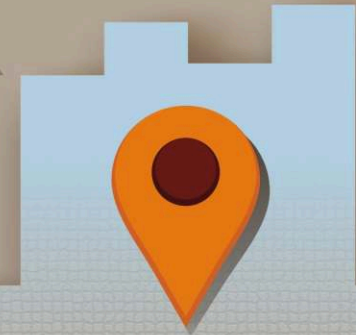




TOWARDS TARABAI PARK

NOW
KOLHAPUR
WILL B **BIG**

K



KOLHAPUR
CITY

DABHOLKAR
CORNER

TOWARDS RAJARAMPURI

**KEY
TO
SUCCESSFUL
BUSINESS**



SHOPS
OFFICES
CORPORATE
RETAIL
SHOWROOMS

**KEY
TO
SUCCESSFUL
BUSINESS**



Project by
M/S Suraj
Estate Developers

When you Invest In
Commercial Premises...

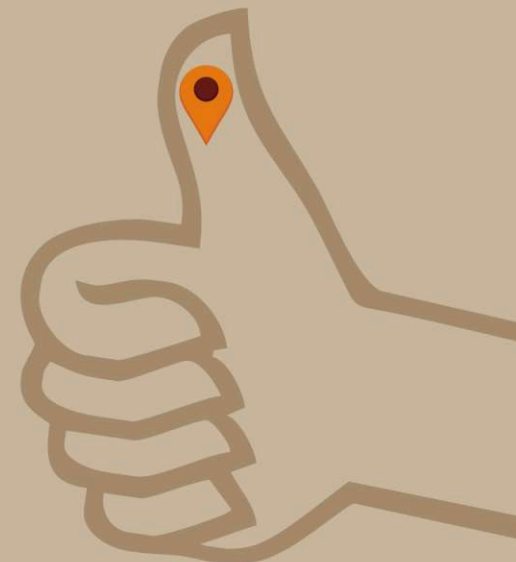
Location Matters...

ROYAL[®]09

A large, stylized location pin icon with a blue-to-orange gradient and a dark red center, positioned over the "9" in the "ROYAL09" text.

TOURIST
BUSINESS HUB

NEAR CBS, ON THE MOST PROMINENT ROAD OF KOLHAPUR





Project by
M/S Suraj
Estate Developers

ROYAL[®]09
TOURIST
BUSINESS HUB



SHOPS | OFFICES | CORPORATE | RETAIL | SHOWROOMS



Project by
M/S Suraj
Estate Developers

ROYAL[®]09
TOURIST
BUSINESS HUB

EFFORTS
ENTHUSIASM
EFFECTIVE
EFFICIENT



**THE ROYAL
ELEGANCE**

Kolhapur, an ever-vibrant market with a multitude of traditions, fashions and new trends. Kolhapur is a shining beacon and rising city of India, through the cooperative movement, Industries, Agriculture, Textile, Education and Technology. Leading in per capita income, Kolhapur welcomes and is waiting for new entrepreneurs by embracing modernity.

Suraj Estate Developers, a famous name in Kolhapur for many housing and commercial projects and in Land Developments.

Station Road - The prominent road of the city, Tararani Chowk to Railway Station is a well established market place. This is where the new & ultra modern project is going to be established.

For the last 65 years, Hotel Tourist was a favorite destination for businessmen, tourists, pilgrims and corporate travelers. Now, this place will transform into a modern commercial complex with all modern Amenities.

Royal 09 fully Commercial Building with Ample Double Level Parking, Graceful Entrance Lobby and Atrium. Wide staircases and lift facilities, separate washrooms on all floors. Shops, showrooms on Lower Ground, Upper Ground and First Floor, Commercial Office Space is available on Second, Third, Fourth and Fifth Floors. Suitable for Professionals, Corporate, Agencies, Distributors and all type of Commercial Activities.

Attractive Elevation and Landscaped, Beautified Surrounding Areas. Well Ventilated and provision for Natural Lights, Fire Safety and Earth Quake Resistant structure.

PROFESSIONAL
AMBIENCE
FOR
CORPORATE
CULTURE...

- ▶ AMAZING ATRIUM ▶ AMPLE PARKING
- ▶ GRACEFUL ENTRANCE ▶ SUFFICIENT NATURAL LIGHT



Project by
M/S Suraj
Estate Developers

ROYAL[®]09
TOURIST
BUSINESS HUB





Project by
M/S Suraj
Estate Developers



WE
BUILD...
WE
DELIVER...



ROYAL[®]09
TOURIST
BUSINESS HUB



WE
ASSURE...

FULLY COMMERCIAL COMPLEX,
SHOPS, SHOWROOMS, RETAIL
ON LOWER, UPPER AND FIRST FLOORS



UPPER FLOOR OFFICES
ARE SUITABLE FOR
CORPORATE OFFICES,
CLINICS, IT ESTABLISHMENTS &
PROFESSIONALS





ROYAL⁰⁹

TOURIST
BUSINESS HUB

NEAR CBS, KOLHAPUR

BIG
K
AWAITS
YOU...



TARABAI PARK →

TARARANI
CHOWK

PUNE
ROAD →

← BANGALORE ROAD



Maha Rera R.No.:
P53000046495

Project Land owned by :
Patankar Hotel Enterprises Pvt. Ltd.

Designed by :
Vision Associates, Kolhapur
Ar. Prashant Kapadi
0231-2526557



Project by
M/S Suraj Estate Developers
"Royal Courts", Panch Bunglow, Shahupuri, Kolhapur.
☎ (0231) 2533999 ✉ info@surajdevelopers.com
🌐 www.surajdevelopers.com

For Bookings Contact :
89564 09696, 98505 64305

MEMBER
CREDAI
KOLHAPUR