

Welcome
AT
NEW PLANET

WHERE
SILENCE
IS
A GLORIOUS
IDENTITY...





Premium Residency

Project by



Suraj Estate Developers



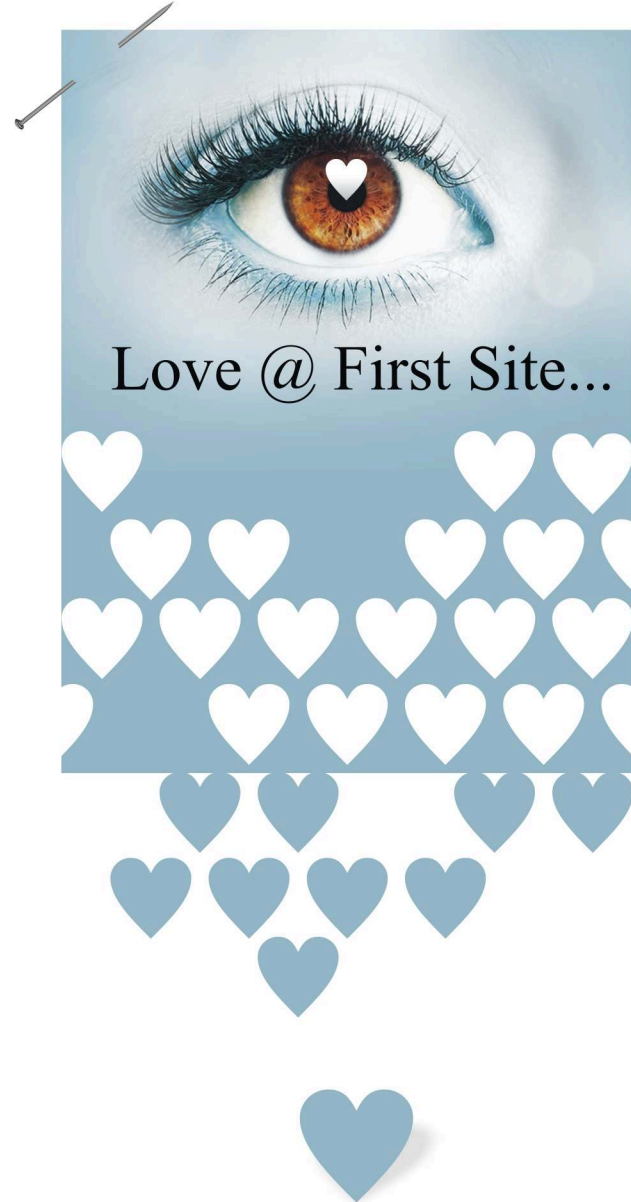
Feel your inner voice...  *Feel the Real Peace...*



Prominent Location
Inbetween
Tarabai Park
&
Ruikar Colony



Premium Residency



P r e m i u m R e s i d e n c y

Site : Opp. Rajesh Motors,
Near Tararani Chowk,
Dr. Babar Hospital, Kolhapur

ROYAL[®]
PLANET

Premium Residency



Premium Residency



Modern lifestyle is the need of the era, but modernity is not just about technology or grandeur, it also about the peaceful greenery with safe and enjoyable lifestyle which you deserve.

Royal Planet, Our new project in a residential area, is in the heart of the city. Serenity is the hallmark, noise pollution free area, surrounded by beautiful bungalows, coppice, greenery. Project has beautiful design, spacious and ample parking, maintaining modernity, and enhancing the enjoyment of a peaceful environment. Neighboring new companions will make your life energetic and healthy through art, sports, yoga, gym, and many more events.

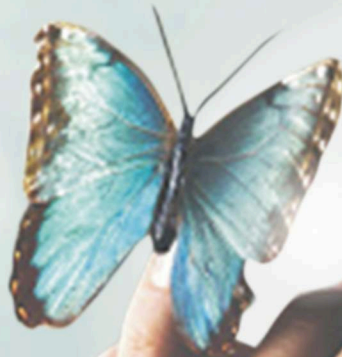
This opportunity offered by Suraj Estate Developers in the home construction sector in the ever-changing modern Kolhapur is an opportunity for the clients who want nature and peace to enjoy happiness and value for investment.

*Enjoy Prestigious & modern
lifestyle @ **Royal Planet***



► 2 & 3 BHK Flats ► Duplex / Terrace Flats with Luxurious Amenities

Royal Planet...
Elite & Excellence...



*Where
Peace is unique...
Nature is Friend...
Life will be Graceful...*

A modern interior lounge area featuring a balcony railing in the foreground. Two contemporary armchairs are positioned on the balcony, facing a large window with sheer curtains. A small round table with a plant and books sits between the chairs. A large, blue, cylindrical pendant light hangs from the ceiling. The space is decorated with greenery, including a large plant on the balcony and a hanging plant in the background. The overall atmosphere is sophisticated and contemporary.

*We believe in
Quality Construction...
Timely Possession...
Customer Satisfaction...*

A M E N I T I E S



Lifts with Power Backup



Society Multipurpose Hall
Ample Car Parking

Basket Ball Court
Green Spaces & Jogging Park



Solar Net Metering



Gymnasium/Health Club



CCTV / Video Door Phone
24hr Security

Children Park
Senior Citizen Park



Common EV Charging Station
Roof Top Amenities



Royal Planet...

The *Happiness...*



SPECIFICATIONS

STRUCTURE :

- Earthquake Resistant RCC Structure.
- AAC Block Brickwork.
- Gypsum finish internally and sponge plaster with texture externally.

DOORS :

- Designer Metal Entrance Door (Tata Prवेश or equivalent brand) with multiple locking system.
- Both side laminated doors for Rooms fitted over engineered wood box frame having mortise lock.
- Terrace Balcony Doors will be sliding metal French Doors with glass panels.
- Washrooms/Utility will have PVC designer doors over granite frame.

WINDOWS :

- UPVC 3/2 track windows with glass shutters and mosquito mesh with oil painted M.S. security grill.

SANITARY FITTINGS :

- All washrooms having Single Lever Diverter Shower System of Jaquar or equivalent make.
- Wall hung Commode with Flush Valve of Jaquar or equivalent make.
- Counter top washbasin with CP Faucet.

TILING :

- Living Room & Kitchen / Dining – Digital Vitrified Tiles of size 1200 x 600mm (4' x 2') with Skirting.
- All Bedrooms - Vitrified Tiles of size 600 x 600mm (2' x 2') with skirting Balcony, Utility & Terraces – Antiskid rustic tiles.
- Washrooms – Antiskid Vitrified Tile Flooring and dado of 7' height vitrified tiles (4' x 2')

KITCHEN PLATFORM :

- Granite top with S.S. Sink (Nirali or equivalent brand) with dado of vitrified tiles (4' x 2') upto 7' height.

ELECTRICAL WORK :

- Concealed wiring work with Adequate quantity modular switches of Legrand or equivalent brand.

LIFTS :

- 8 passengers automatic modern elevators of OTIS or equivalent brand with power backup.





Premium Residency



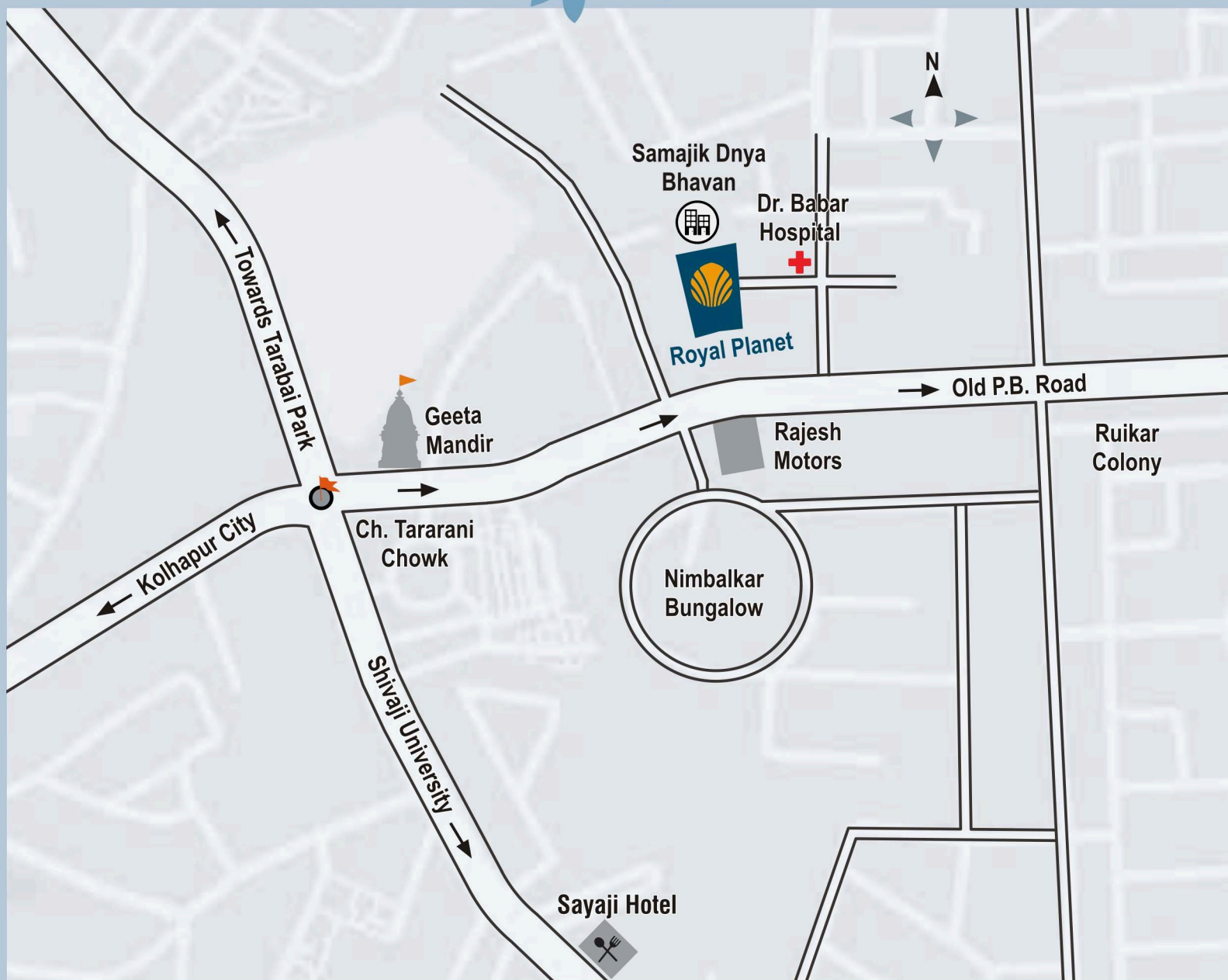
Suraj Estate
Developers



2 BHK Flat



3 BHK Flat





Maha Rera R.No.:
P53000048148

MEMBER
CREDAI
KOLHAPUR



Premium Residency

Site : Opp. Rajesh Motors,
Near Tararani Chowk,
Dr. Babar Hospital, Kolhapur

Land Owners in JDA:
Hindustan Constructions
Shree Saraswati Concrete Works

Designed by :
Prism Design Studio, Kolhapur
Ar. Rupesh Malu - 87938 79231

Structural Designer :
Associated Designers, Kolhapur
0231-2528614

Legal advisor :
Adv. Vidyadhar Joshi, Kolhapur
84460 15620



Suraj Estate Developers

"Royal Courts", Panch Bunglow, Shahupuri, Kolhapur.

☎ (0231) 2533999 ✉ info@surajdevelopers.com

🌐 www.surajdevelopers.com

For Bookings Contact :

9421111794 / 8329306495